

RANSON

Ranson Limited

Flat 10, 11/F., Kingsford Ind. Centre, 13 Wang Hoi Road,
Kowloon Bay, Kowloon, Hong Kong.
Tel: (852) 2427 0999 Fax: (852) 2427 1999
E-mail: ranson@netvigator.com

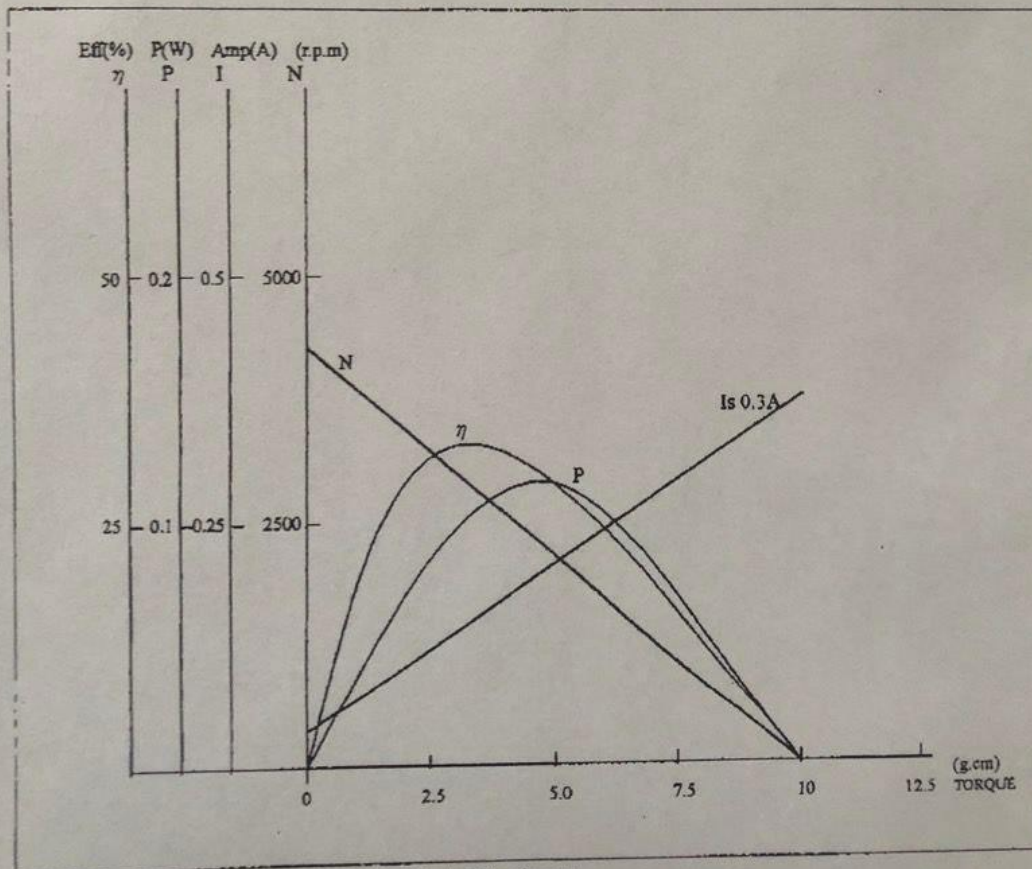
捷
有
限
公
司

Model: RS133C-10300-45

Voltage: 3V DC

Typical motor performances

Model	Voltage (DC)	Free Load		At Max. eff.					Stall	
		Speed (r.p.m)	Current (A)	Speed (r.p.m)	Current (A)	Torque (g.cm)	Wait (W)	Eff (%)	Current (A)	Torque (g.cm)
RS133C-10300-45	3V	4200	0.04	2930	0.12	3.3	0.10	32	0.3	10

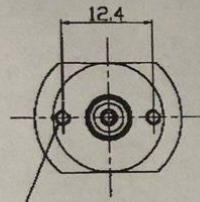
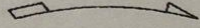


Remarks: Electrical characteristic with $\pm 15\%$ tolerance.

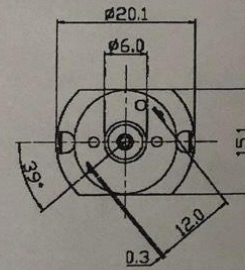
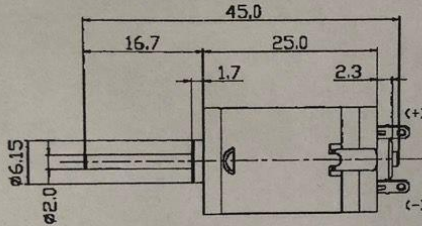
(for reference only)

Model : RS133C-10300-45

Direction of Rotation



2 - ISO M2x0.4
TAPPED HOLES

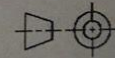


Approved By:

Collingan
Engineer

Customer confirmation:

Ref
Company chop & Signature



Scale 1.5 : 1

Remarks : All Dimensions in mm
(for reference only)