

Single analog switch

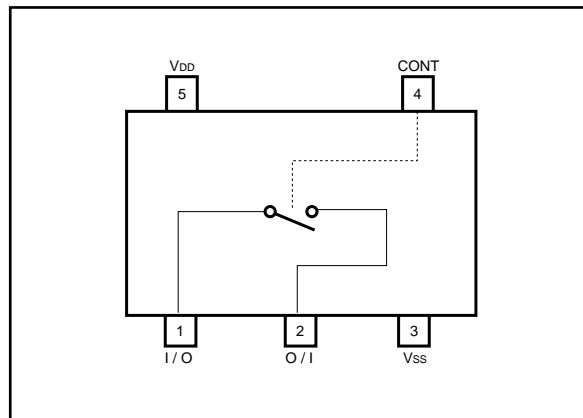
BU4S66

The BU4S66 is an ultra-compact IC with one circuit of the bi-directional analog switch BU4066B built into an SMP package. Setting the enable input (CONT) to the "H" level sets the impedance between the switch input and the output pins low (ON state) and setting CONT to the "L" level sets the impedance high (OFF state).

●Features

- 1) Low current dissipation.
- 2) Super-mini mold package designed for surface mounting.
- 3) Wide range of operating power supply voltage.
- 4) Direct drive of 2 L-TTL inputs and 1 LS-TTL input.

●Block diagram



● Absolute maximum ratings ($T_a = 25^\circ\text{C}$)

Parameter	Symbol	Limits	Unit
Power supply voltage	V_{DD}	$V_{SS} - 0.3 \sim V_{SS} + 18$	V
Power dissipation	P_d	170	mW
Input current	I_{IN}	± 10	mA
Operating temperature	T_{opr}	$-40 \sim +85$	$^\circ\text{C}$
Storage temperature	T_{stg}	$-55 \sim +150$	$^\circ\text{C}$
Input voltage	V_{IN}	$V_{SS} - 0.3 \sim V_{DD} + 0.3$	V

*1 These values indicate the range limits of the voltage that can be applied to each pin without destroying it. Operation is not guaranteed at these values.

*2 Reduced by 1.7mW for each increase in T_a of 1°C over 25°C .

● Recommended operating conditions ($T_a = 25^\circ\text{C}$, $V_{SS} = 0\text{V}$)

Parameter	Symbol	Min.	Typ.	Max.	Unit
Power supply voltage	V_{DD}	3	—	16	V
Input voltage	V_{IN}	0	—	V_{DD}	V

● Electrical characteristics

DC characteristics (unless otherwise noted, $V_{SS} = 0\text{V}$, $T_a = 25^\circ\text{C}$)

Parameter	Symbol	Min.	Typ.	Max.	Unit	V_{DD} (V)	Conditions	Measurement circuit
Control input high level voltage	V_{IH}	3.5	—	—	V	5	Current between input and output = $10\mu\text{A}$	Fig.1
		7.0	—	—	V	10		
		11.0	—	—	V	15		
Control input low level voltage	V_{IL}	—	—	1.5	V	5	Current between input and output = $10\mu\text{A}$	Fig.1
		—	—	3.0	V	10		
		—	—	4.0	V	15		
ON resistance	R_{ON}	—	290	950	Ω	5	$0 \leq V_{IN} \leq V_{DD}$ $R_L = 10\text{k}\Omega$	Fig.2
		—	120	250	Ω	10		
		—	85	160	Ω	15		
OFF-channel leakage current	I_{off}	—	—	0.3	μA	15	$V_{IN} = 15\text{V}$, $V_{OUT} = 0\text{V}$	Fig.3
		—	—	-0.3		15	$V_{IN} = 0\text{V}$, $V_{OUT} = 15\text{V}$	
Static current dissipation	I_{DD}	—	—	1.0	μA	5	$V_{IN} = V_{DD}$ or GND	—
		—	—	2.0		10		
		—	—	4.0		15		
Input capacitance (control input)	C_C	—	8	—	pF	—	$f = 1\text{MHz}$	—
Input capacitance (switch input)	C_S	—	10	—	pF	—	$f = 1\text{MHz}$	—

Switching characteristics (unless otherwise noted, $V_{SS} = 0V$, $T_a = 25^\circ C$)

Parameter	Symbol	Min.	Typ.	Max.	Unit	VDD (V) VSS (V)		Conditions	Measurement circuit
Propagation delay time (I / O → O / I)	t _{PLH}	—	15	—	ns	5		R _L = 10kΩ C _L = 50pF	Fig.4
		—	8	—	ns	10			
		—	5	—	ns	15			
	t _{PHL}	—	15	—	ns	5			
		—	8	—	ns	10			
		—	5	—	ns	15			
Propagation delay time (CONTROL → O / I)	t _{PHZ}	—	100	—	ns	5		R _L = 10kΩ C _L = 50pF	Fig.5
		—	70	—	ns	10			
		—	65	—	ns	15			
	t _{PLZ}	—	100	—	ns	5		R _L = 10kΩ C _L = 50pF	Fig.6
		—	70	—	ns	10			
		—	65	—	ns	15			
	t _{PZH}	—	80	—	ns	5		R _L = 10kΩ C _L = 50pF	Fig.5
		—	35	—	ns	10			
		—	25	—	ns	15			
	t _{PZL}	—	80	—	ns	5		R _L = 10kΩ C _L = 50pF	Fig.6
		—	35	—	ns	10			
		—	25	—	ns	15			
Maximum control frequency	f _{Max.} (C)	—	10	—	MHz	5		R _L = 1kΩ C _L = 50pF	—
		—	12	—	MHz	10			
		—	12	—	MHz	15			
Max. propagation frequency	f _{Max.} (I - O)*1	—	30	—	MHz	5	- 5	R _L = 1kΩ C _L = 50pF	—
Feedthrough attenuation	F.T.*2	—	600	—	kHz	5	- 5	R _L = 1kΩ	Fig.7
Sinewave distortion (1kHz)	THD*3	—	0.05	—	%	5	- 5	R _L = 10kΩ C _L = 50pF	
Crosstalk (CONTROL → O / I)	CT _C	—	200	—	mV	5		R _{IN} = 1kΩ R _{OUT} = 10kΩ C _L = 15pF	Fig.8
		—	400	—	mV	10			
		—	600	—	mV	15			

*1 Frequency that enables $20 \log (V_{OUT} / V_{IN}) = -3dB$ *2 Frequency that enables $20 \log (V_{OUT} / V_{IN}) = -50dB$ *1 *2 *3 Use a $V_{IN} = \pm 2.5V_{PP}$ sine wave.

●Measurement circuits

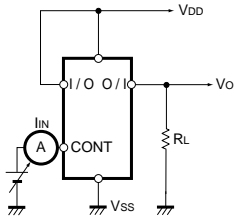


Fig. 1 Input voltage, current

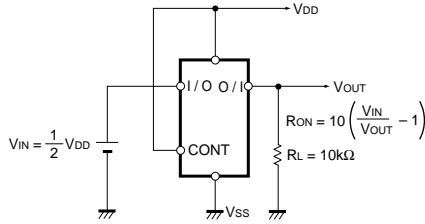


Fig. 2 ON resistance

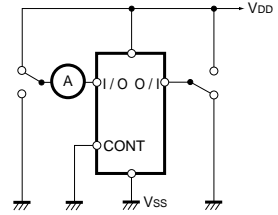


Fig. 3 Channel OFF leakage current

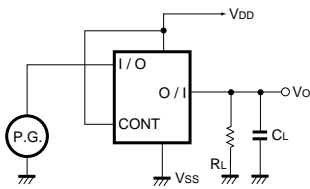


Fig. 4 Switching characteristic measurement circuit

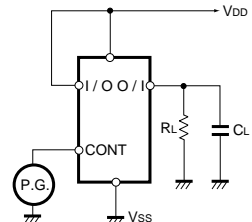
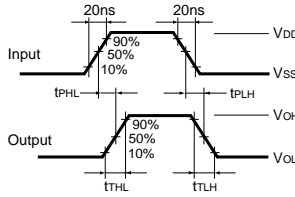


Fig. 5 Propagation delay time (CONT→OUT)

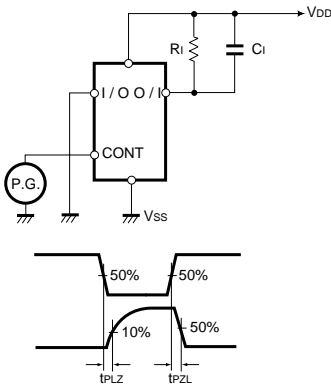
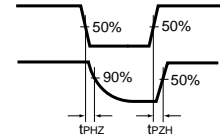


Fig. 6 Propagation delay time (CONT→OUT)

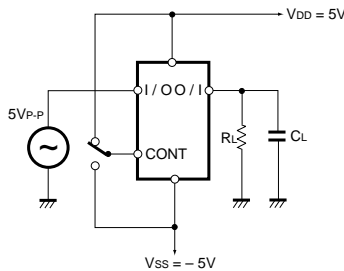


Fig. 7 Sine wave distortion, feedthrough attenuation

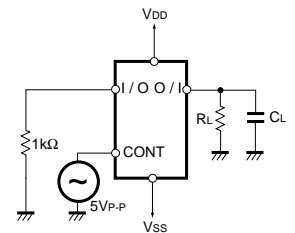


Fig. 8 Control IN→OUT crosstalk

●External dimensions (Units: mm)

