

# .100"X.100" (2.54mmX2.54mm ) Center Dual Row P.C. Board Connectors



## 2802 Series

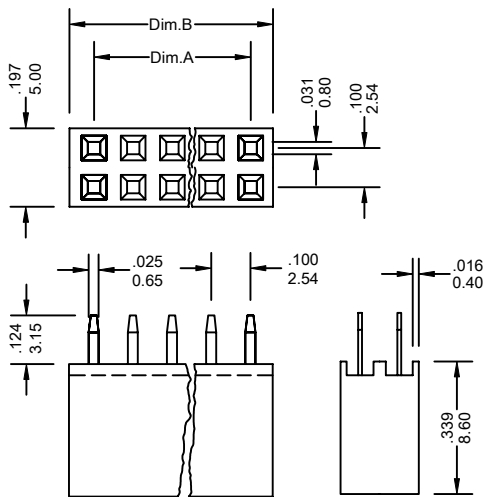
### FEATURES:

- . 4-80 Circuits
- . PBT + 30% Glass Fiber [UL 94V-0]
- . Designed for parallel and perpendicular board stacking, also for PCB-to-harness and PCB-to-chassis connections
- . Stackable side-to-side on .100"X.100" [2.54mmX2.54mm] grid
- . Utilizes double-Wipdebox contact
- . Mates with .025"[0.64mm] square pins mounted on a board right angle headers, and straight headers

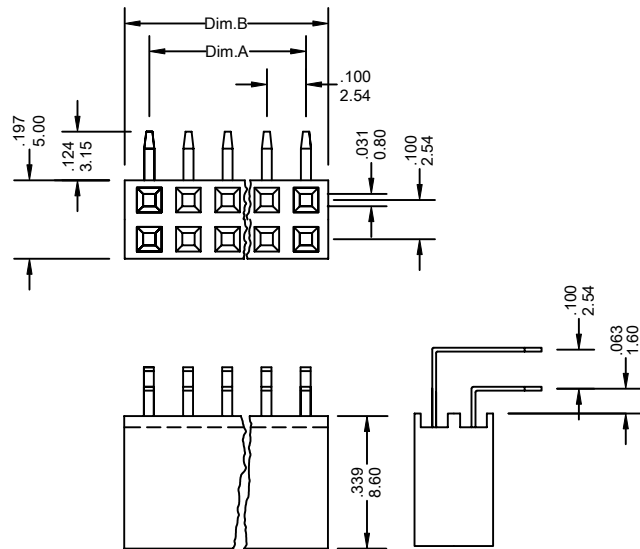
### SPECIFICATIONS:

- . Current rating: 3A AC, DC
- . Voltage rating: 250V AC, Maximum
- . Temperature range: -40°C ~ +105°C
- . Contact resistance: Initial Value/10mΩ max.  
After environmental testing /20mΩ max.
- . Insulation resistance: 1000 MΩ min
- . Withstand voltage: 1500V AC/minute
- . Applicable PC board thickness: .063"[1.6mm]

UNIT: INCH  
MM



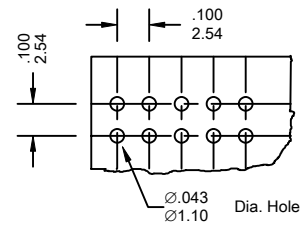
(S: Straight)



(R: Right Angle)

### Ordering Information 2802 Series

Series No.	No. of Contacts	Contact Type	Contact Plating	
2802	- 2X10P	S	G1	- PB
2802 Series	2X02P ~ 2X40P	S: Straight R: Right Angle	T: Tin G1: Gold Flash S1: Gold Flash S5: 5u" Gold S10: 10u" Gold S15: 15u" Gold S30: 30u" Gold [G: Full Gold] [S: Selective Gold]	RoHs



Recommended PCB Hole Pattern

### Dimensional Information

Circuits	Dim.A± .008 0.20	Dim.B± .008 0.20	Circuits	Dim.A± .008 0.20	Dim.B± .008 0.20	Circuits	Dim.A± .008 0.20	Dim.B± .008 0.20
4	.100 2.54	.220 5.58	6	.200 5.08	.320 8.12	8	.300 7.62	.420 10.66

2802 Series

\* FOR CIRCUIT SIZES 10 THROUGH 80 ADD .100" OR 2.54MM FOR EACH ADDITIONAL PIN.